



### MINI NEXT Certified Pre-Owned Consultation Report

Order Number: 16349583	Dealer Name: Seattle MINI	Dealer Principal: Alae Laarissi
Date of Visit: 5/18/2015	Dealer Code: M3386401	General Manager: Steve Bell
Time of Visit: 11:57 AM	Address: 11550 Lake City Way NE	Pre-Owned Manager: Richard Stone
Consultant ID: 10681	City, State, Zip: Seattle, WA - 98125	Consultation Contact:

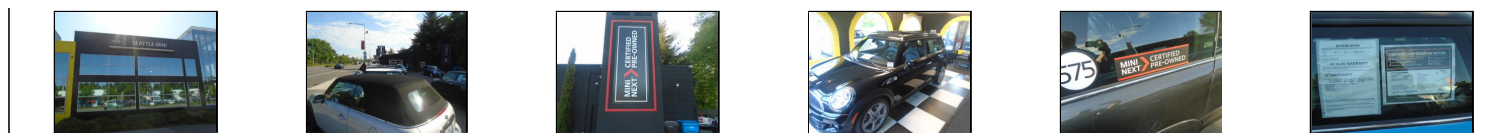
### FACILITY INSPECTION

#### RECOMMENDED PRACTICES

	Does Not Meet Std	Meets Std
MINI NEXT CPO vehicles on lot have minimum required POS items.		1
MINI NEXT CPO vehicles are all grouped and displayed separately.		1
MINI NEXT Pre-Owned vehicles are all grouped and displayed separately.		1
Non-MINI Pre-Owned vehicles are all grouped and displayed separately.		1
The 5 Pre Sale VINs selected from POIS are listed on dealer website.		1
The number of Pre Sale VINs in POIS inventory closely match the number of MINI NEXT CPO VINs posted on the dealer website.		1
Best Practice - there is a MINI NEXT CPO vehicle (in or near) the showroom.		✓
Best Practice - There is MINI NEXT CPO branding on the facility (signage, etc).		✓

ACTUAL POINTS ATTAINED: 6

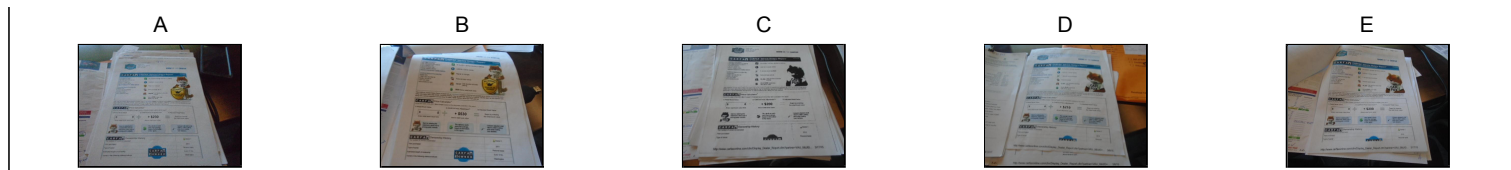
#### DEALERSHIP IMAGES:



### ADMINISTRATIVE INSPECTION (POST-SALE)

Vehicles Evaluated	VIN	Vehicle Information	Stock Number	Sale Date
A	WMWSU3C52CT260695	2012 Mini Cooper Base	CT260695	2/28/2015
B	WMWSU3C55BT099676	2011 Mini Cooper Base	BT099676	5/5/2015
C	WMWSV3C50CTY26222	2012 Mini Cooper S	CTY26222	4/14/2015
D	WMWZF3C56DT491691	2013 Mini Cooper Base	DT491691	3/26/2015
E	WMWZG3C53CTY38213	2012 Mini Cooper Clubman Base	CTY38213	4/9/2015

#### POST SALE IMAGES:



VEHICLE MUST MEET ALL REQUIREMENTS TO BE FOUND COMPLIANT

A B C D E

#### REQUIRED DOCUMENTATION

MINI NEXT CPO Inspection Checklist (original)- completed, dated and signed by Technician, Service Manager and Pre-Owned Manager. If days on lot exceeds 150 days or 2,000 miles, a second CPO inspection is required.(Customer signature required in CA)	3	3	3	3	3
DCS Warranty Vehicle Inquiry showing maintenance history, open campaigns, disclosures, etc.	2	2	2	2	2
First Key Reader Data Print Out shows vehicle mileage on or before date of POIS listing	1	1	1	1	1
Second Key Reader Data Print Out shows vehicle mileage and maintenance status at beginning of MINI NEXT CPO inspection	1	1	1	1	1
Third Key Reader Data Print Out shows vehicle mileage and is dated on or after date of MINI NEXT CPO inspection and minimum 5 mile mileage increase from Second Key Reader Data Print Out	1	1	1	1	1

**CPO Consultation Report**

and completion of all repairs called out on the MINI NEXT CPO inspection checklist					
Vehicle History Report (VHR) showing no cause for disqualification and signed by customer. Can be Carfax or AutoCheck. Must be dated on or before date of sale	2	2	2	2	2
Statement of Certification and Coverage signed by customer and sales consultant found in Sales Jacket	5	5	5	5	5
<b>Vehicle Compliance Rating:</b>	<b>Yes</b>	<b>Yes</b>	<b>Yes</b>	<b>Yes</b>	<b>Yes</b>
Copy of the "Federal Buyers Guide" in jacket.	1	1	1	1	1
Buyer's Order shows that vehicle was enrolled in POIS on or before date of sale	1	1	1	1	1
Scheduled maintenance is performed per MINI guidelines; Based on MINI NEXT CPO Dealer Operations Manual: Inspection Guidelines Engine Oil Service Maintenance Table 1 and Table 2. Reference Key Read data printout	10	10	10	10	10
<b>Individual Total Vehicle score:</b>	<b>30</b>	<b>30</b>	<b>30</b>	<b>30</b>	<b>30</b>
<b>Total points for all vehicles:</b>			<b>150</b>		
<b>POST-SALE (AVERAGE PER VEHICLE) SCORE:</b>			<b>30</b>		

**VEHICLE INSPECTION (PRE-SALE)**

Vehicles Evaluated	VIN	Vehicle Information	Stock Number	Certification Date
<b>A</b>	<b>WMWSU3C51CT260073</b>	<b>2012 Mini Cooper Base</b>	<b>SP898</b>	<b>3/14/2015</b>
<b>B</b>	<b>WMWSU3C56CT262739</b>	<b>2012 Mini Cooper Base</b>	<b>SP916</b>	<b>4/12/2015</b>
<b>C</b>	<b>WMWSU3C59CT255929</b>	<b>2012 Mini Cooper Base</b>	<b>SP910</b>	<b>3/24/2015</b>
<b>D</b>	<b>WMWSU3C59CT264341</b>	<b>2012 Mini Cooper Base</b>	<b>SP892</b>	<b>3/1/2015</b>

**PRE SALE IMAGES:**



**VEHICLE MUST MEET ALL REQUIREMENTS TO BE INITIALLY FOUND COMPLIANT.**

**VIN INSPECTION**

	A	B	C	D
DCS Warranty Vehicle Inquiry is performed to review Maintenance history, open campaigns, disclosures, etc.	1	1	1	1
VIN plate is visible and it matches Safety Compliance Label on driver's side B pillar as well as Window Sticker.	1	1	1	1

**VEHICLE CONDITION**

Vehicle has no disqualifying factors	1	1	1	1
Vehicle is free of non-OEM modifications	1	1	1	1

**Vehicle Compliance Rating:**

<b>Yes</b>	<b>Yes</b>	<b>Yes</b>	<b>Yes</b>
------------	------------	------------	------------

**REQUIRED DOCUMENTATION**

MINI NEXT CPO Inspection Checklist (original)- completed, dated and signed by Technician, Service Manager and Pre Owned Manager. If days on lot exceeds 150 days or 2,000 miles, a second CPO inspection is required.(Customer signature required in CA).	3	3	3	3
DCS Warranty Vehicle Inquiry showing maintenance history, open campaigns, disclosures, etc.	2	2	2	2
First Key Reader Data Print Out shows vehicle mileage before date of POIS listing	1	1	1	1
Second Key Reader Data Print Out shows vehicle mileage and is dated on or before date of certification	1	1	1	1
Third Key Reader Data Print Out shows vehicle mileage and is dated on or after date of certification and minimum 5 mile mileage increase from Second Key Reader Data Print Out	1	1	1	1
Repair order(s) showing completion of the MINI NEXT CPO Inspection Checklist and completion of all repairs called out on the MINI NEXT CPO Inspection Checklist	3	3	3	3
Vehicle History Report (VHR) showing no cause for disqualification and signed by customer. Can be Carfax or AutoCheck. Must be dated on or before date of sale	2	2	2	2

**MECHANICAL INSPECTION**

**CPO Consultation Report**

Washer Fluid, Automatic Transmission fluid, Differential fluid)				
Brake thickness and condition meets standards; brake pads show AT LEAST 5mm. Check MINI NEXT CPO Inspection Checklist for status and confirm break repair if called out	6	6	6	6
Engine and compartment clean	1	1	1	1
Wiper blades and Floor mats are clean or replaced. Must be present. OEM not required	1	1	1	1
Two master keys are available	1	1	1	1

**SCHEDULED MAINTENANCE**

CBS is up to date with no 'due' services required. Reference Key Read data printout	2	2	2	2
Scheduled maintenance is performed per MINI guidelines; Based on MINI NEXT CPO Dealer Operations Manual: Inspection Guidelines Engine Oil Service Maintenance Table 1 and Table 2. Reference Key Read data printout	10	10	10	10

**MECHANICAL**

Vehicle is free of any mechanical issues	1	1	1	1
Vehicle is free of any undercarriage/engine compartment leaks	1	1	1	1
Engine starts and idles properly	1	1	1	1

**TIRES**

All tires are MINI approved and all four tires match	5	5	5	5
All tires have minimum tread depth 3mm across tread width measured at the wear bar	5	5	5	5
Tire pressure meets vehicle specification (Four plus spare if applicable)	1	1	1	1

**APPEARANCE INSPECTION****EXTERIOR**

MINI NEXT CPO window sticker is affixed to window glass or on vehicle dash	1	1	1	1
Body Finish: meets minimum requirements as documented in MINI NEXT CPO Dealer Operations Manual	1	1	1	1
Trim: meets minimum requirements as documented in MINI NEXT CPO Dealer Operations Manual	1	1	1	1
Wheels: are OEM and meets minimum requirements as documented in MINI NEXT CPO Dealer Operations Manual	1	1	1	1
Glass: meets minimum requirements as documented in MINI NEXT CPO Dealer Operations Manual	1	1	1	1

**INTERIOR**

Interior appearance: meets minimum requirements as documented in MINI NEXT CPO Dealer Operations Manual	1	1	1	1
No Smoker evidence found	1	1	1	1
Instrument Panel/Cover Pad Surface/Ashtrays/Package Shelf/ Indicator Lights/Gauges/Warning Tones (operation, lights, clock): meets minimum requirements as documented in MINI NEXT CPO Dealer Operations Manual	1	1	1	1
No warning lights/service indicators lit on the dashboard	1	1	1	1
Time is set correctly on the clock	1	1	1	1
Carpet/Trunk/Passenger Compartment/ Headliner/Seats/Interior Trim: meets minimum requirements as documented in MINI NEXT CPO Dealer Operations Manual	1	1	1	1

Individual Total Vehicle score: **64**      **64**      **64**      **64**

Total points for all vehicles: **256**

PRE-SALE (AVERAGE PER VEHICLE) SCORE: **64**

**Consultation Summary**

Section	Max. Points available	Points obtained
FACILITY INSPECTION	6	6
ADMINISTRATIVE INSPECTION (POST-SALE)	30	30
VEHICLE INSPECTION (PRE-SALE)	64	64
<b>TOTAL CONSULTATION SCORE</b>	<b>100</b>	

CONSULTATION STATUS:

**Meets BMW CPO Standards (80+)**